

www.powerplus.us



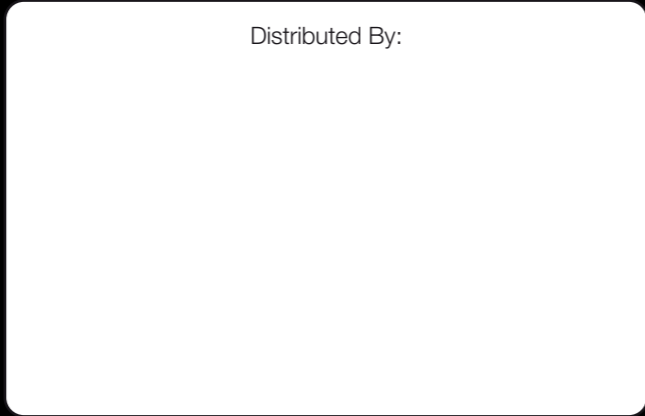
International Division

POWERPLUS GROUP PTE. LTD.
Powerplus Building
39 Ubi Crescent, Singapore 408587
Tel: (65) 63399333
Fax: (65) 63399933
Email: enquiry@powerplus.us

Research & Development Facility

POWERPLUS GROUP INC., U.S.A.
2130 N. Arrowhead Avenue,
San Bernardino, CA 92405, USA
Tel: (1) 909 300 3333
Fax: (1) 909 323 3333
Email: hq@powerplus.us

Distributed By:



BULLDOZER

D85EX-15

POWERPLUS is the registered TM of POWERPLUS GROUP INC., USA
In the United States of America & Worldwide

All rights of manufacturer and of this book reserved. Unauthorized duplication is a violation of application law.

CORPORATE OVERVIEW

POWERPLUS GROUP INC., USA, a leading global manufacturer of a comprehensive range of construction equipment, is part of Worldwide Techno-Equipment Group (1973) Pte Ltd. Established since 1973, POWERPLUS GROUP has evolved into a world-renowned organization that offers machinery unparalleled in price, quality and performance.

POWERPLUS machinery is manufactured with enhanced capacities to exceed even the most stringent international standards of quality and safety. With the aim of producing machinery that is able to withstand even the most extreme climatic conditions and rugged terrains, POWERPLUS Research & Development team which has its Headquarters in the United States, has been the backbone behind all its innovative engineering solutions.

Optimizing the best of technology from the United States, Europe and Japan, POWERPLUS machinery is configured to its ideal technical capabilities. A multinational team of engineers analyzes the data collected from our network of distributors worldwide and are on the constant lookout for ways to maximize the life-span of POWERPLUS machinery.

Today the Company's clientele spans over 100 countries across 6 continents.

At the forefront of setting quality standards, every POWERPLUS machine undergoes a technical review after 2 years and is tested rigorously before a new model is churned out of its production facility.

With an emphasis on delivering value and excellent after-sales service to our customers, the POWERPLUS experience outshines and outclasses its competitors in all aspects.



ENGINEERED FOR OPTIMAL DURABILITY

- POWERPLUS range of bulldozers are constructed with the finest craftsmanship to withstand the most extreme climatic conditions that Mother Nature has to offer. Through years of research and data analysis, POWERPLUS has perfected the finer details of its bulldozers by achieving excellent ground holding capability and superior mobility through rough terrains.
- Besides incorporating the best of components such as engines, transmissions, undercarriages and hydraulic parts available in today's marketplace, POWERPLUS also adopts a minimalistic approach during the design process of its bulldozers. By keeping its configuration simple, it has enabled users regardless of their skill levels to operate the bulldozer effectively.
- The best way to describe a POWERPLUS Bulldozer is that it simply pushes and pushes.

CONDUCTIVE WORKING ENVIRONMENT FOR OPERATOR'S COMFORT AND INCREASED PRODUCTIVITY

- Hexagonal glass cabin facilitates exceptional visibility to execute the most refined cuts.
- Ergonomically-positioned control levers with personalized amenities such as POWERPLUS adjustable suspension seat, MP3 player and air-conditioning.
- Excellent vibration and well-damped cabin provides an undisturbed working environment.
- Well-displayed instrument panel equipped for easy monitoring of all functions onboard a POWERPLUS Bulldozer.

PERKS FOR END-USERS

- Responsive CAT and Cummins engine produce outstanding power with superior fuel efficiency.
- Strengthened chassis frame and undercarriage built to seamlessly overcome the most rugged terrains and obstacles.
- POWERPLUS Bulldozers offer higher dozing capacities as compared to its competitors.
- Ground engaging tools and undercarriage parts are highly interchangeable.

MINIMIZED ENVIRONMENTAL IMPACT

- Bulldozers are manufactured according to international safety and environmental standards.
- Higher emission standards that reduces environmental pollution.
- Up to 90% of recyclable and bio-degradable parts.

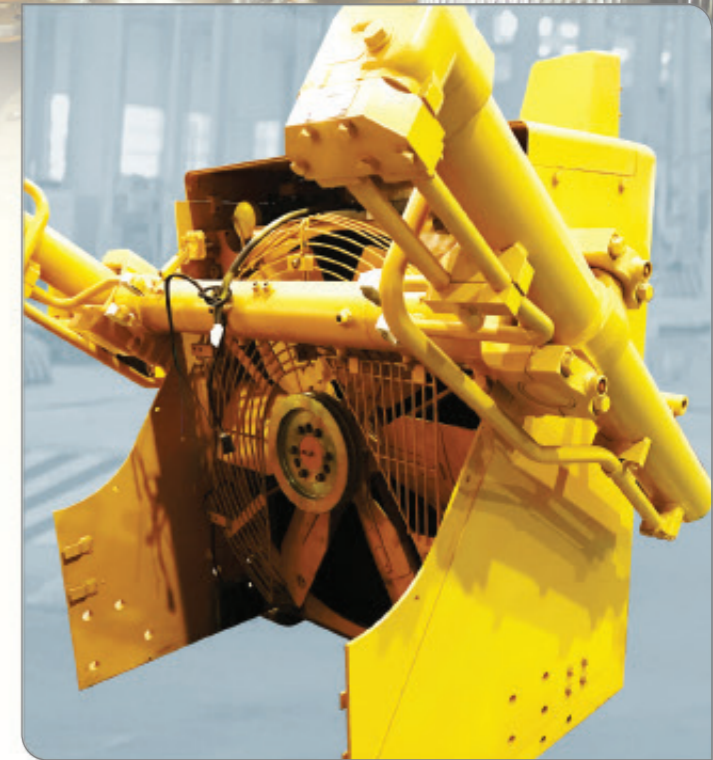


OPERATOR'S COMFORT

At POWERPLUS, we make it our responsibility to help our clients capitalize their investment. Our engineers at POWERPLUS recognize that operators spend most of their time working in the machine. Considerable emphasis has been placed to ensure that operators are comfortable and able to work optimally, as it directly equates to higher productivity.

POWERPLUS Bulldozers are completed with a clear, well-displayed instrumental panel, ergonomically-positioned controls and a well-damped cabin tailored to reduce external noise and vibrations. Our engineers have also gone the extra mile to study the built of operators from different regions worldwide before deciding on the optimal placement of the seat.

To top it off, POWERPLUS hexagonal glass cabin comes equipped with wipers on both doors. This permits close-to-perfect visibility for operators in wet weather conditions, allowing operators to make the perfect cut throughout the year regardless of weather conditions.



FINAL DRIVE

As the last part of the transmission system, POWERPLUS recognizes that the final drive is one of the most critical components of the bulldozer. For this reason, we have opted for a two-stage spur gear heat treated with Italian technology to withstand relentless wear and tear, and a fully-lubricated final drive system for improved life in abrasive conditions.

COOLING SYSTEM

As POWERPLUS Bulldozers cater to the global market, an effective cooling system is required to suit different climates. An all-new enlarged radiator is designed for superior heat-dissipation, ensuring that the engine works at an ideal temperature. Unobstructed access to the radiator makes cleaning and servicing hassle-free.

MAINTENANCE

Our engineers have gone back to the drawing board with the aim to design a machine that focuses on ease of maintenance. Daily checks can be performed at ground level and the various aspects of the machine's condition can be monitored through the well-displayed instrument panel.

Large swing-out doors on the front and both sides of the front frame provide easy access to the engine compartment for scheduled preventive maintenance and heavy repairs. POWERPLUS Bulldozers also come with a centralized pressure testing port that enables users to execute troubleshooting procedures effortlessly.



D85EX-15

ENGINE	
Model	CUMMINS NT855-C280
Type	4-stroke cycle, turbocharged, intercooled, in-line
No. of Cylinders	6
Bore x Stroke	Ø140.0 mm x 152.0 mm
Piston Displacement	14.0 L
Flywheel Horsepower	175 kW (235 hp) @ 1800 rpm
Max Torque	1085 N.m @ 1300 rpm
Emission Rating	Euro II
Fuel Consumption	205g / kW.h (153g / hp.h)
Start Motor	24 V, 11 kW
Alternator	24 V, 60 A
Battery	24 V (12 V x 2) - 120AH
Fuel System	PT pump, head valve direct injection
Governor	Centrifugal, all-speed governor
Cooling System	Forced circulation driven by centrifugal pump, exhaust fan
Air Cleaner	Dry type, horizontal-type with air dust collector

TRANSMISSION	
Torque Converter	3-element, 1-stage, 1-phase
Cooling System	Water-cooled
Transmission	Powershift, planetary gear, multiple-disc clutch, hydraulically forced lubrication driven by gear pump
Central Drive Shaft	Spiral bevel gear, single-stage speed reduction splash lubrication

FINAL DRIVE	
Final Drive	2-stage spur gear, speed reduction, splash lubrication

TRAVEL SPEED		
Gear	Forward	Reverse
1st	3.6 km/h	4.3 km/h
2nd	6.5 km/h	7.7 km/h
3rd	11.2 km/h	13.2 km/h

UNDERCARRIAGE SYSTEM	
Suspension	Oscillation-type with equalizer bar and forward mounted pivot shafts
No. of Carrier Rollers	2 (each side)
No. of Track Rollers	6 (each side)
No. of Idler	1 (each side)
No. of Track Shoes	38 (each side)
Track Shoe Type	Single grouser
Pitch	216.0 mm
Width	560 mm
Grouser Height	72 mm
Track Gauge	2000 mm
Ground Clearance	405 mm
Ground Pressure	0.077 MPa
Gradeability	30 °
Minimum Turning Radius	3.3 m

WEIGHT	
Operating Weight	23400 kg
With Ripper Attachment	25700 kg / 26200 kg

HYDRAULIC COOLING SYSTEM	
Maximum Pressure	14 MPa (140kg f/cm ²)
Type	Gear pump
Displacement	262 L/min
Control Valve Type	Spool valve (raise, hold, lower, float)
Hydraulic Tank	Fully enclosed control valve and oil filter
Hydraulic Hoses	Continental
Working Cylinder Inner Diameter	120 mm x 2

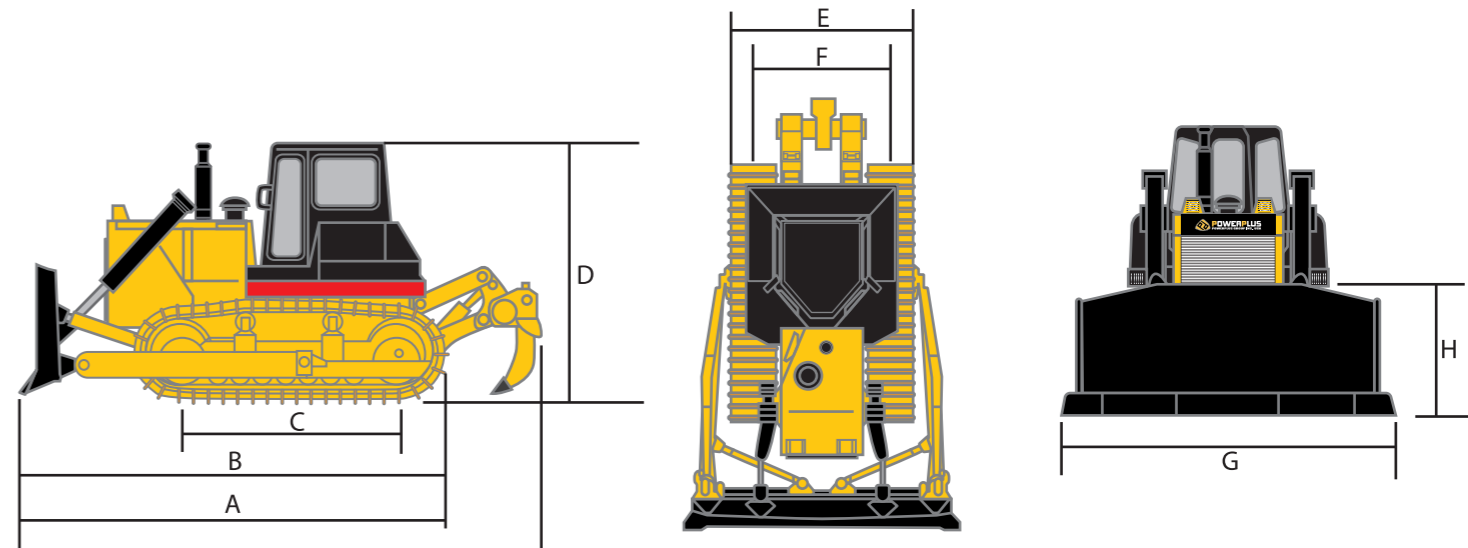
STEERING SYSTEM	
Steering clutch	Wet type, multiple-disc, spring loaded, hydraulically separated, hand-operated hydraulic controls
Steering brake	Wet type, band brake, foot pedal-operated (with hydraulic booster and clutch linkage)

COOLANT AND LUBRICANT CAPACITY	
Coolant	79 L
Fuel tank	450 L
Engine oil	45 L
Hydraulic oil tank	110 L
Bevel gear case	122 L
Final drive case	41 L (each side)

WORKING EQUIPMENT AND ATTACHMENT	
Blade Type	Straight-tilt, hydraulically-actuated with servo valve
Blade Support	Brace type with tilt cylinder on the right side
Width	3725 mm
Height	1315 mm
Blade Capacity	6.4 m ³
Maximum Lift Above Ground	1210 mm
Maximum Drop Below Ground	540 mm
Maximum Tilt Adjustment	735 mm
Blade Weight	1650 kg
Maximum Pulling Force	203 kN

RIPPER	
For Multi-Shank Ripper	
Maximum Digging Depth	666 mm
Maximum Lift Above Ground	555 mm
No. of Shanks	3
For Single-Shank Ripper	
Maximum Digging Depth	695 mm
Maximum Lift Above Ground	515 mm
No. of Shanks	1

DIMENSIONS			D85EX-15	
A	Overall Length (With Ripper)	mm	7095	
B	Overall Length (With Blade)	mm	5495	
C	Length Of Track On Ground	mm	2730	
D	Overall Height	mm	3402	
E	Overall Width (Without Trunnions)	mm	2560	
F	Track Gauge	mm	2000	
G	Blade Width	mm	3725	
H	Blade Height	mm	1315	



ATTACHMENTS

OPTIONAL

ENGINE
Cold Weather Kit
Desert Filter
Enlarged Radiator
Euro III Engine

CABIN
Glass Protection
Heater
Rear-View Camera
ROPS/FOPS Cabin

UNDERCARRIAGE
Anti-Windup Bar
Low Ground Pressure Tracks (LGP)
Sprocket Guards
Track Roller Guards
Widened Track Shoes
(610mm / 660mm / 710mm / 760mm)

BLADE
Angle Blade
Environmental Blade
Semi-U Blade
U Blade

ACCESSORIES
LED Lights
Solar Film



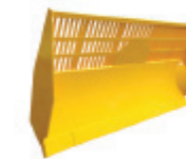
LGP TRACK



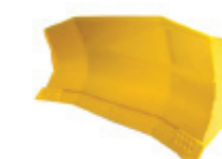
STRAIGHT TILT BLADE



ANGLE BLADE



ENVIRONMENTAL BLADE



U BLADE



ROPS/FOPS CABIN



WINCH



SINGLE-SHANK RIPPER



MULTI-SHANK RIPPER

*Availability of equipment may vary across different regions. Kindly consult your POWERPLUS territory sales personnel for details.