

www.powerplus.us



**International Division**

POWERPLUS GROUP PTE. LTD.  
Powerplus Building  
39 Ubi Crescent, Singapore 408587  
Tel: (65) 63399333  
Fax: (65) 63399933  
Email: enquiry@powerplus.us

**Research & Development Facility**

POWERPLUS GROUP INC., U.S.A.  
2130 N. Arrowhead Avenue,  
San Bernardino, CA 92405, USA  
Tel: (1) 909 300 3333  
Fax: (1) 909 323 3333  
Email: hq@powerplus.us

Distributed By:



**EXCAVATOR**  
**PP300E-XI**

POWERPLUS is the registered TM of POWERPLUS GROUP INC., USA  
In the United States of America & Worldwide

All rights of manufacturer and of this book reserved. Unauthorized duplication is a violation of application law.

## INTRODUCING THE WORLD'S BEST EXCAVATORS

POWERPLUS excavators deliver unparalleled performance and versatility. Featuring efficient engines and powerful hydraulics, they are engineered for durability and ease of maintenance.

Our comprehensive lineup combines industry-leading technology with innovation to meet the toughest mining and construction challenges. By offering one of the lowest cost-per-ton ratios in their class, POWERPLUS excavators ensure significant savings and a superior return on investment.



### KEY COMPONENTS

- CUMMINS engine
- FLUTEK (Korea) hydraulic main pump
- VARTA battery
- Italian technology heat treatment bucket teeth

# PP300E-XI

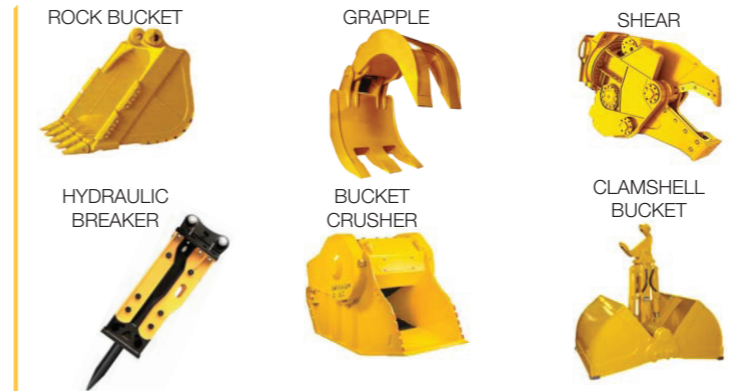
MAIN SPECIFICATION		
Operating Weight	kg	30000
Rated Bucket Capacity	m <sup>3</sup>	1.4
Maximum Digging Force	kN	169
Swing Speed	rpm	9.4
Gradeability	°	35

ENGINE		
Model	CUMMINS QSB7.0	
Rated Power	hp	230
Rated Speed	rpm	2000
Displacement	L	6.7
No. of Cylinders	6	
Emission	Euro III	

UNDERCARRIAGE		
Travel Speed (High / Low)	km/h	5.9 / 3.4
Ground Pressure	kPa	65
Track Rollers	9	
Carrier Rollers	2	
No. of Tracks	48	

HYDRAULIC SYSTEM		
Main Pump	FLUTEK	
Maximum Flow	L/min	265 x 2
Working Pressure	MPa	34.3

### OPTIONAL ATTACHMENTS

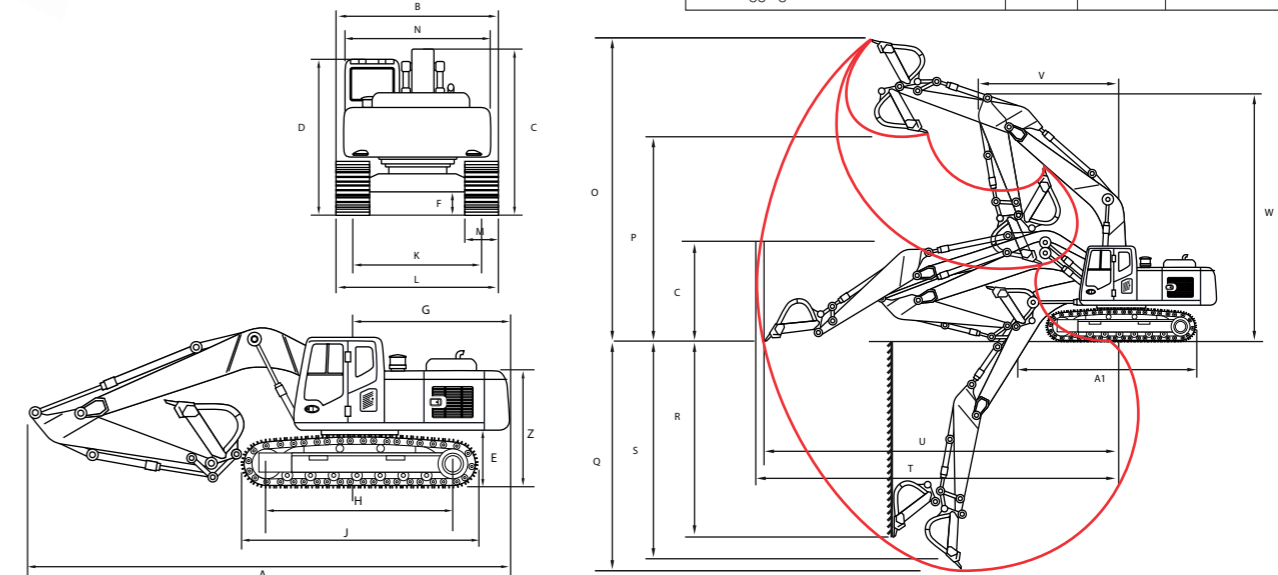


SERVICE REFILL CAPACITY		
Fuel Tank	L	595
Hydraulic Tank	L	310
Engine Oil	L	24
Coolant	L	30

CABIN	
Type	An ergonomically designed sound proof cabin, enabling wide operational view, comes standard with designer upholstery, adjustable POWERPLUS mechanical suspension driver's seat, streamline dashboard, aircon and radio/mp3 player for extensive operations with well deserved comfort.

DIMENSION			
Overall Length	A	mm	10030
Overall Width	B	mm	3190
Overall Height (To top of Boom)	C	mm	3500
Overall Height (To top of Cab)	D	mm	3160
Counterweight Ground Clearance	E	mm	1190
Min. Ground Clearance	F	mm	523
Rear Swing Radius	G	mm	3110
Track Ground Length	H	mm	4030
Track Length	J	mm	4957
Track Gauge	K	mm	2590
Track Width	L	mm	3190
Track Shoe Width	M	mm	600
Turntable Width	N	mm	2700
Min. Swing Radius	V	mm	3975
Max. Height at Min. Swing Radius	W	mm	7835
Height of Counterweight	Z	mm	2175
Ground Length (Transportation)	A1	mm	5545
Boom Length		mm	5850
Arm Length		mm	3050

WORKING RANGE			
Max. Digging Height	O	mm	9380
Max. Dumping Height	P	mm	6510
Max. Digging Depth	Q	mm	6800
Max. Vertical Digging Depth	R	mm	5780
Max. Digging Depth for 2440 mm	S	mm	6880
Max. Digging Reach	T	mm	10170
Max. Digging Reach at Ground Level	U	mm	9990



As our products are upgraded periodically, we reserve all rights to change any information without prior notice.