

www.powerplus.us



International Division

POWERPLUS GROUP PTE. LTD.
Powerplus Building
39 Ubi Crescent, Singapore 408587
Tel: (65) 63399333
Fax: (65) 63399933
Email: enquiry@powerplus.us

Research & Development Facility

POWERPLUS GROUP INC., U.S.A.
2130 N. Arrowhead Avenue,
San Bernardino, CA 92405, USA
Tel: (1) 909 300 3333
Fax: (1) 909 323 3333
Email: hq@powerplus.us

Distributed By:



EXCAVATOR

PP500E-XI

POWERPLUS is the registered TM of POWERPLUS GROUP INC., USA
in the United States of America & Worldwide

All rights of manufacturer and of this book reserved. Unauthorized duplication is a violation of application law.



TRAVEL MOTOR

- Hydraulically balanced piston motor ensures a consistent supply of high-pressure and operation performance
- An offset type speed design ensures reliable changeover of the displacement
- Floating seals prevent foreign materials like dust or water from entering the motor
- Heavy duty bearings are used in the motor for longer lifespan
- Auto-brake system enhances safety operation
- Motor offers a built-in double counter balance valve and shock-less crossover relief valve, providing speed control and braking with minimum shock
- Case rotation type gear reducer has improved durability and reliability due to high precision parts and an equally loaded design



HIGH-STRENGTH FRAME

- Sealed lubricated track, proven to reduce wear and tear
- Heavy excavator elongated base support
- Slope track frame design allow debris to flow down easily
- Robust X-shaped slope type track frame



SUPERIOR VISIBILITY

The ergonomic cabin design provides a wide and clear operational view for the operator to control the mighty workhorse with confidence. Blind spots are also minimized, enabling the operator to maintain a high level of concentration while conducting the job in an effective manner.

COMPLETE CONTROL

Extra leg room, adjustable suspension seat, streamline dashboard and user-friendly control levers are designed to suit the human movement. The operator is able to maneuver the machine with excellent bucket visibility, enabling the most delicate finishes to be performed in the harshest conditions with maximum productivity.

COMPLETE CONTROL

Reinforced structure, coupled with a well-cooled and low-noise designed cabin provides a conducive environment for the operator with maximum comfort and reduced fatigue for the long hours of work. A safe working cabin is POWERPLUS's way of ensuring maximum efficiency while delivering optimal results.



IMPROVED CONTROL SYSTEM

The high-output engine with intercooler features an ESS (Engine Speed Sensing) system and total horsepower control system that ensures the most efficient usage of the engine at all times. Engine complies with Tier II & Tier III (European) Regulations depending on the market requirements.

The new monitor is equipped with an intelligent computer CPU control system. With this latest addition, switching between the various operating modes is made very convenient. P for "Priority" mode allows users to work fast and hard; while E for "Fuel Economy" mode, has four options — E0, E1, E2, E3, to best meet the users' operational habits to optimize fuel economy.

PP500E-XI

MAIN SPECIFICATIONS		
Operating Weight	kg	48500
Rated Bucket Capacity	m ³	2.3
Maximum Digging Force	kN	256
Swing Speed	rpm	8.9
Gradeability	°	35

ENGINE		
Model	CUMMINS QSM11	
Rated Power	hp	405
Rated Speed	rpm	1800
Displacement	L	10.8
No. of Cylinders	6	
Emission Rating	Euro III	

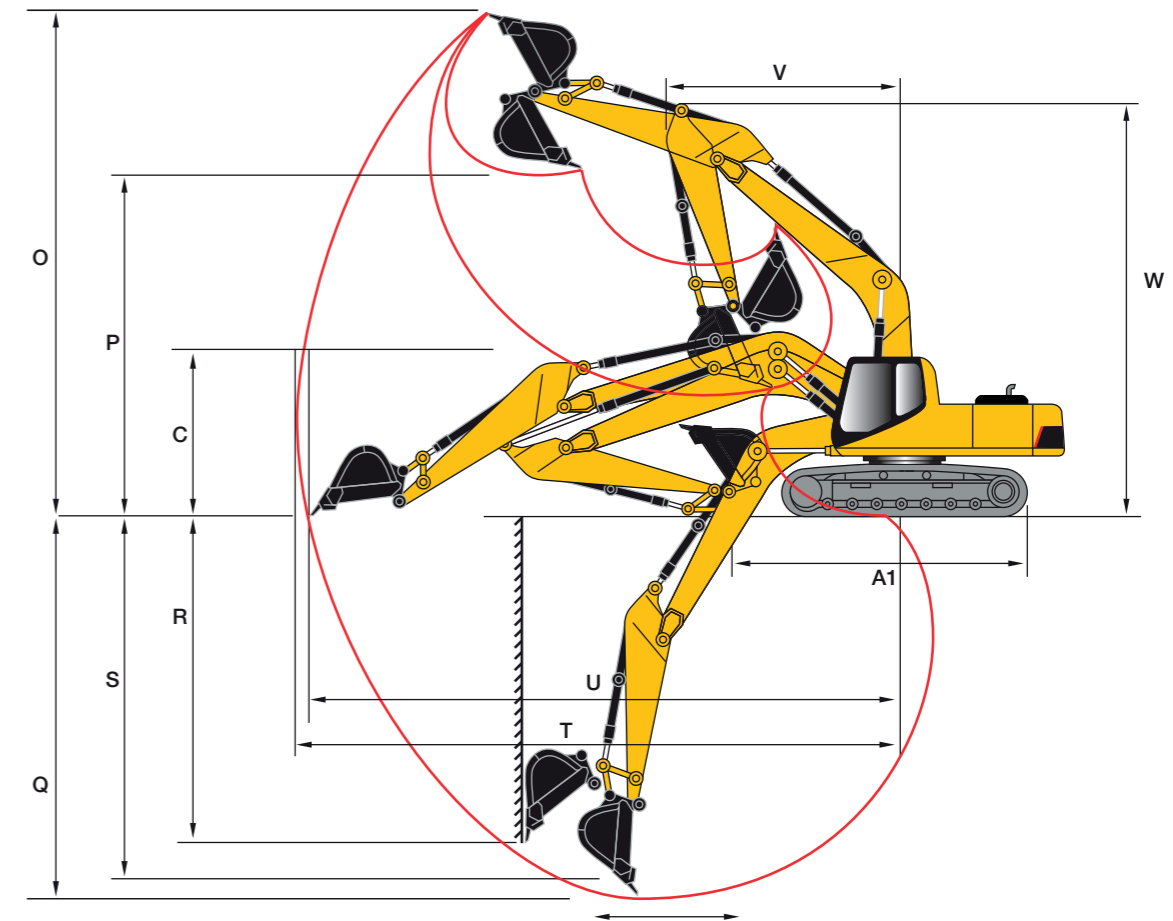
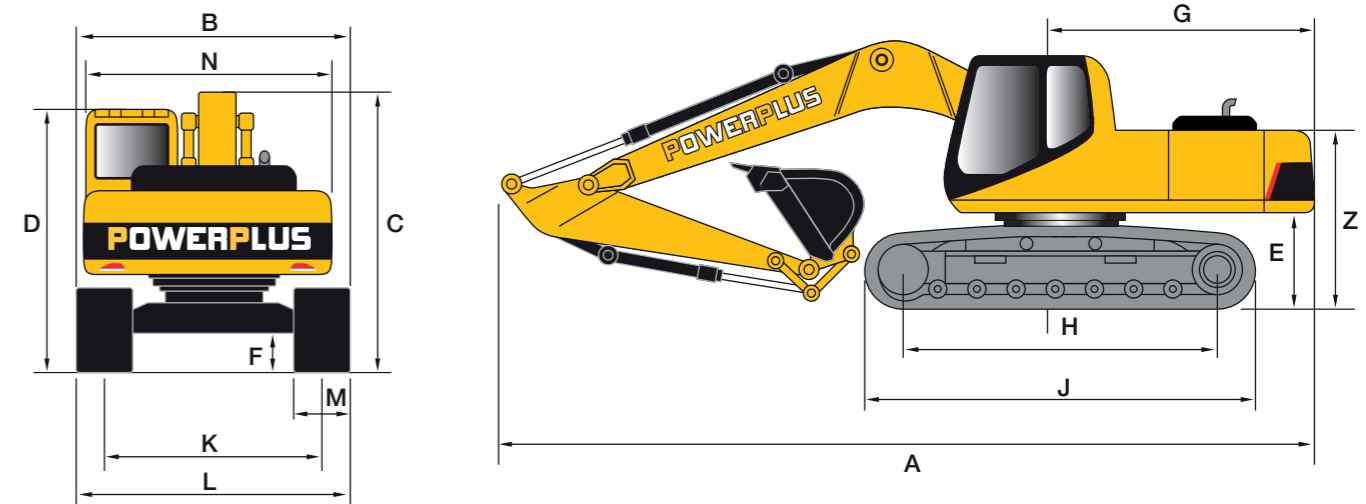
UNDERCARRIAGE		
Travel Motor	O & K	
Travel Speed (High / Low)	km/h	4.9 / 2.7
Ground Pressure	kPa	88.5
Track Rollers	9	
Carrier Rollers	2	
No. Of Tracks	49	

HYDRAULIC SYSTEM		
Main Pump	KAWASAKI	
Main Valve	KAWASAKI	
Swing Motor	KAWASAKI	
Maximum Flow	L/min	360 x 2
Working Pressure	MPa	34.3

SERVICE REFILL CAPACITY		
Fuel Tank	L	650
Hydraulic Tank	L	335
Engine Oil	L	38
Coolant	L	38

DIMENSIONS				
Overall Length	A	mm		12260
Overall Width	B	mm		3490
Overall Height (To Top Of Boom)	C	mm		3755
Overall Height (To Top Of Cab)	D	mm		3280
Counterweight Ground Clearance	E	mm		1269
Minimum Ground Clearance	F	mm		722
Rear Swing Radius	G	mm		3735
Track Ground Length	H	mm		4360
Track Length	J	mm		5390
Track Gauge	K	mm		2890
Track Width	L	mm		3490
Track Shoe Width	M	mm		600
Turntable Width	N	mm		3045
Minimum Swing Radius	V	mm		5015
Maximum Height At Min Swing Radius	W	mm		9295
Height of Counterweight	Z	mm		2830
Ground Length (Transportation)	A1	mm		7590
Boom Length		mm		7060
Arm Length		mm		2900

WORKING RANGE				
Maximum Digging Height	O	mm		10680
Maximum Dumping Height	P	mm		7428
Maximum Digging Depth	Q	mm		7300
Maximum Vertical Digging Depth	R	mm		6800
Maximum Digging Depth Cut For 2440mm Level	S	mm		7660
Maximum Digging Reach	T	mm		11540
Maximum Digging Reach At Ground Level	U	mm		11325



OPTIONAL

ENGINE

Pre-Heat Starter

HYDRAULIC SYSTEM

Customized Bucket Size
Extended Arm
Quick Coupler

CABIN

Glass Protection
Heater and Ventilation
Solar Film

UNDERCARRIAGE

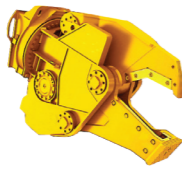
Track Width
600/700/800 mm

SAFETY

Additional Lights
ROPS/FOPS Cabin
Rear View Camera

OPTIONAL ATTACHMENTS

SHEAR



ROCK BUCKET



GRAPPLE



CLAMSHELL BUCKET



HYDRAULIC BREAKER



BUCKET CRUSHER



GLOBAL NETWORK DISTRIBUTION

POWERPLUS is committed to creating long-term value for its customers, partners and stakeholders. Our Service Centers are strategically located in major construction, industrial and manufacturing hubs in key regions around the world.

Given our years of experience in the industry, it is no doubt that our customers can always rely on us for the expertise, services and solutions we provide. Most importantly, you will find our after-sales service a satisfying experience at all our Service Centers worldwide.



DURABILITY, RELIABILITY & AFFORDABILITY

POWERPLUS Parts and Service Centers provides a convenient channel for you to order the original spare parts through a network of highly certified OEM manufacturers and an effective distribution of spare parts through our global network of vendors.

From determining the correct part number to locating and ordering, we are committed to working round-the-clock for timely solutions and delivery to ensure we serve our customers promptly and efficiently.

Coupled with affordable parts prices and high interchangeability across the POWERPLUS machinery range, we take pride in being able to offer value to our customers with cost-effective solutions. Most importantly, you are able to retain the machines with high residual value to enhance your return on investment.



SERVICE

Delivering Unsurpassed Customer Service - Because You Matter.

Our dedicated team of customer service executives, skilled engineers and technicians are well-trained to ensure timely and propitious support throughout the customer life cycle. With a comprehensive dealer network coverage and service facilities support, POWERPLUS dedicated team of account managers and service teams from the Customer Service Charter are trained to respond to your queries and requests promptly and efficiently.

To deliver more, our service package includes educating our customers with training, maintenance and servicing to ensure customers are empowered to utilize the machines at its best; therefore optimizing the machine's performance and increasing uptime.

At POWERPLUS, we strive to build and maintain long-term relationships with each and every client based on trust, integrity and professionalism.

