



POWERPLUS®
POWERPLUS GROUP INC., USA



OVER

50

YEARS OF TRUST

OPERATING WEIGHT 24100kg

DIGGING DEPTH 15m

BUCKET CAPACITY 0.8m³



TELESCOPIC CLAMSHELL
PP250E-XI

CORPORATE OVERVIEW

POWERPLUS GROUP INC., USA, a leading global manufacturer of a comprehensive range of construction equipment, is part of Worldwide Techno-Equipment Group (1973) Pte Ltd. Established since 1973, POWERPLUS GROUP has evolved into a world-renowned organization that offers machinery unparalleled in price, quality and performance.

POWERPLUS machinery is manufactured with enhanced capacities to exceed even the most stringent international standards of quality and safety. With the aim of producing machinery that is able to withstand even the most extreme climatic conditions and rugged terrains, POWERPLUS Research & Development team which has its Headquarters in the United States, has been the backbone behind all its innovative engineering solutions.

Optimizing the best of technology from the United States, Europe and Japan, POWERPLUS machinery is configured to its ideal technical capabilities. A multinational team of engineers analyzes the data collected from our network of distributors worldwide and are on the constant lookout for ways to maximize the life-span of POWERPLUS machinery.

Today the Company's clientele spans over 100 countries across 6 continents.

At the forefront of setting quality standards, every POWERPLUS machine undergoes a technical review after 2 years and is tested rigorously before a new model is churned out of its production facility.

With an emphasis on delivering value and excellent after-sales service to our customers, the POWERPLUS experience outshines and outclasses its competitors in all aspects.





LANDING DETECTION SYSTEM

Equipped with proximity sensors to inform the operator when the bucket hits the ground to ensure a safer and more efficient working operation



HIGH-TENSILE & WEAR RESISTANT NYLON

Telescopic slider is made of high-tensile and wear-resistant nylon material for a longer service life



HIGH-STRENGTH BOOM HOUSING

Incorporating high-strength steel in the fabrication of the telescopic boom housing



TELESCOPIC WINCH

Improved telescopic winch design and system prolongs the life-span of wire rope by 18%



ERGONOMIC CABIN

With the latest ergonomic cabin design, operator fatigue is significantly reduced, making way for longer hours of safe operation each day.



PREMIUM HYDRAULIC SYSTEM

Equipped with Kawasaki pump and other premium hydraulic components



FUEL EFFICIENT ENGINE

Equipped with a powerful yet fuel efficient Cummins reduces environmental impact and carbon footprint



CAMERA SYSTEM

Equipped with high-definition camera coupled with a LCD for excellent visibility during operations



ROBUST CHASSIS

X-frame design undercarriage ensures stability and durability even in the harshest working environments

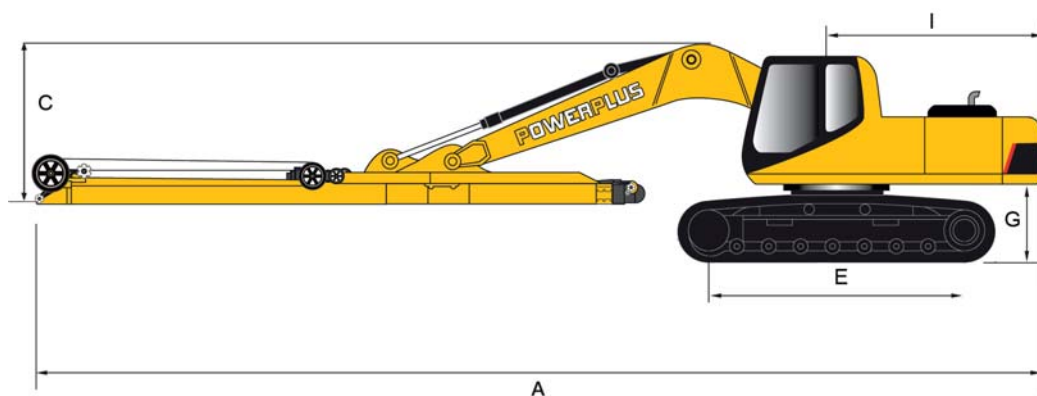
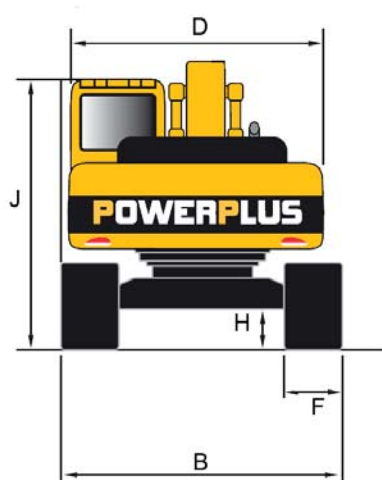


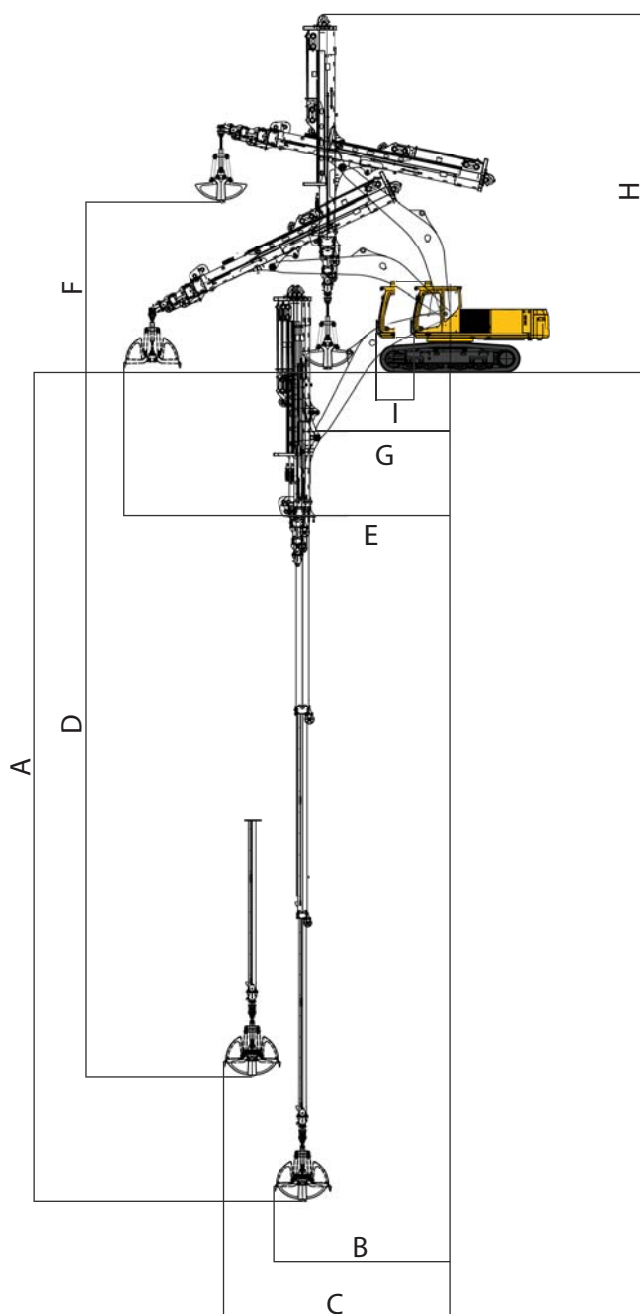
CLAMSHELL BUCKET

Specially designed hydraulic cylinder for grab work application is incorporated on the clamshell bucket. Wear resistant GETs are also used for a less frequent replacements

ENGINE		
Model		CUMMINS 6BTAA5.9
Rated Power	hp	180
Rated Speed	rpm	2000
Displacement	L	5.9
No. of Cylinders		6
Type		4 Cycle, Direct Injection
Aspiration		Turbocharged
Emission		Euro II
UNDERCARRIAGE		
Travel Speed (High/Low)	km/h	5.8 / 3.2
Track Rollers		8
Carrier Rollers		2
No. Of Tracks		47
HYDRAULIC SYSTEM		
Main Pump		Kawasaki
Maximum Flow	L/min	223 x 2
Working Pressure	MPa	37
CABIN		
An ergonomically designed sound proof cabin, enabling wide operational view, comes standard with designer upholstery, adjustable POWERPLUS mechanical suspension driver's seat, streamline dashboard, aircon and radio/mp3 player for extensive operations with well deserved comfort.		

CONTROLS			
Implement Levers			2
Travel Levers			2
Telescopic Arm Control Pedal			1
SERVICE REFILL CAPACITY			
Fuel Tank	L		420
Hydraulic Tank	L		230
Engine Oil	L		22
Coolant	L		28
WEIGHT			
Equipped with PTB220 telescopic arm and 0.8 m³ clamshell bucket			
Operating Weight	T		24.1
DIMENSION			
Overall Length	A	mm	12320
Overall Width	B	mm	2780
Overall Height (To Top Of Boom)	C	mm	3150
Overall Width (Upper Structure)	D	mm	2700
Distance Between Tumblers	E	mm	3260
Track Shoes Width	F	mm	600
Counterweight Clearance	G	mm	1080
Min. Ground Clearance	H	mm	470
Rear-end Swing Radius	I	mm	2800
Overall Height (To Top Of Cabin)	J	mm	3090

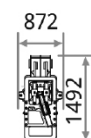
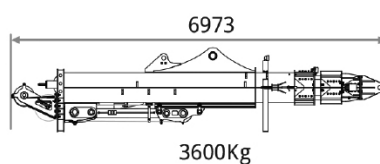




WORKING RANGE

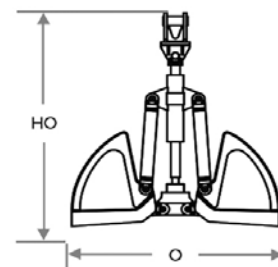
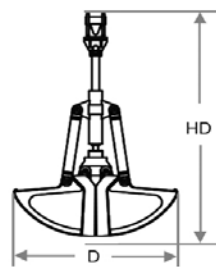
Telescopic Arm Type			PTB220
Telescopic Arm System			Hydraulic Cylinder + Wire Rope
Max. Vertical Digging Depth	A	mm	15200
Radius at Max. Vertical Digging Depth	B	mm	4670
Max. Vertical Digging Radius	C	mm	6430
Depth At Max. Vertical Digging Radius	D	mm	11825
Max. Working Radius	E	mm	7950
Max. Dumping Height	F	mm	2870
Min. Front Swing Radius	G	mm	3980
Height At Min. Front Swing Radius	H	mm	9475

TELESCOPIC ARM



CLAMSHELL BUCKET

Cylinder Stroke	mm	380
Max. Cylinder Pressure	bar	200
Max. Cylinder Flow	L/min	70
Bucket Length (D: Close / O: Open)	mm	1980 / 2210
Bucket Height (HD: Close / HO: Open)	mm	2780 / 2150
Bucket Width (W)	mm	930
Grab Capacity	m³	0.8
Weight	kg	1250



OPTIONAL

ENGINE

Pre-Heat Starter

WORKING EQUIPMENT

Customized Bucket Size

Extended Arm

Quick Coupler

CABIN

Glass Protection

Heater and Ventilation

Solar Film

UNDERCARRIAGE

Track Width

600/700/800 mm

SAFETY

Additional Lights

ROPS/FOPS Cabin

Rear View Camera

ATTACHMENTS

SHEAR

For cutting through
scrap materials



GRAPPLE

For material handling
and sorting of rocks, wood
and waste materials.



HYDRAULIC BREAKER

For demolishing
concrete structures
and rocks



CLAMSHELL BUCKET

For dredging,
excavation
and moving
stockpiles



ROCK BUCKET

For digging rubble,
tough rock and minerals
in mining applications



BUCKET CRUSHER

For crushing rubble and
rocks into usable material

*Availability of equipment may vary across different regions. Kindly consult your POWERPLUS territory sales personnel for details.

GLOBAL NETWORK DISTRIBUTION

POWERPLUS is committed to creating long-term value for its customers, partners and stakeholders. Our Service Centers are strategically located in major construction, industrial and manufacturing hubs in key regions around the world.

Given our years of experience in the industry, it is no doubt that our customers can always rely on us for the expertise, services and solutions we provide. Most importantly, you will find our after-sales service a satisfying experience at all our Service Centers worldwide.



DURABILITY, RELIABILITY & AFFORDABILITY

POWERPLUS Parts and Service Centers provides a convenient channel for you to order the original spare parts through a network of highly certified OEM manufacturers and an effective distribution of spare parts through our global network of vendors.

From determining the correct part number to locating and ordering, we are committed to working round-the-clock for timely solutions and delivery to ensure we serve our customers promptly and efficiently.

Coupled with affordable parts prices and high interchangeability across the POWERPLUS machinery range, we take pride in being able to offer value to our customers with cost-effective solutions. Most importantly, you are able to retain the machines with high residual value to enhance your return on investment.



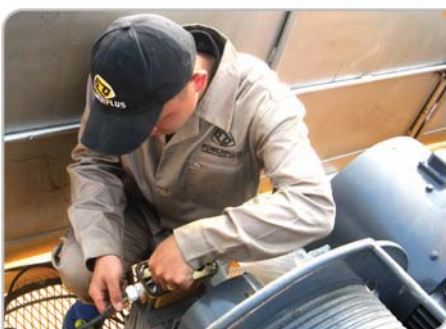
SERVICE

Delivering Unsurpassed Customer Service - Because You Matter.

Our dedicated team of customer service executives, skilled engineers and technicians are well-trained to ensure timely and propitious support throughout the customer life cycle. With a comprehensive dealer network coverage and service facilities support, POWERPLUS dedicated team of account managers and service teams from the Customer Service Charter are trained to respond to your queries and requests promptly and efficiently.

To deliver more, our service package includes educating our customers with training, maintenance and servicing to ensure customers are empowered to utilize the machines at its best; therefore optimizing the machine's performance and increasing uptime.

At POWERPLUS, we strive to build and maintain long-term relationships with each and every client based on trust, integrity and professionalism.



www.powerplus.us

International Division

POWERPLUS GROUP PTE. LTD.

Powerplus Building
39 Ubi Crescent, Singapore 408587
Tel: (65) 63399333
Fax: (65) 63399933
Email: enquiry@powerplus.us

Research & Development Facility

POWERPLUS GROUP INC., U.S.A.

2130 N. Arrowhead Avenue,
San Bernardino, CA 92405, USA
Tel: (1) 909 300 3333
Fax: (1) 909 323 3333
Email: hq@powerplus.us

Distributed By:

 **POWERPLUS** is the registered TM of  **POWERPLUS GROUP INC., USA**
In the United States of America & Worldwide

All rights of manufacturer and of this book reserved. Unauthorized duplication is a violation of application law.