



**POWERPLUS®**  
POWERPLUS GROUP INC., USA



**MINI EXCAVATOR**  
**PP85E-XI**



## FEATURES



- Ergonomically designed cabin for extensive operations with well deserved comfort



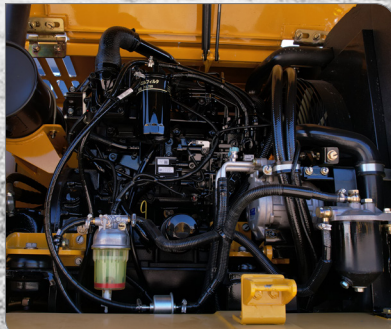
- Pilot control levers ensure a smooth & easy operation



- Multifunctional monitor shows data at a glance



- Standard dozer blade to increase versatility



- Powered by Yanmar engine to maximize digging performance



- Easy access to major components and service points



## MAIN SPECIFICATIONS

Operating Weight	kg	8200
Rated Bucket Capacity	m <sup>3</sup>	0.32
Maximum Digging Force	kN	52.7
Swing Speed	rpm	11.2
Maximum Gradeability	°	35

## ENGINE

Model	YANMAR 4TNV98T	
Rated Power	hp	73
Rated Speed	rpm	2200
Emission	Euro III	

## UNDERCARRIAGE

Travel Speed (High/Low)	km/h	5.1 / 2.7
Ground Pressure	kPa	30
Track Rollers		5
Carrier Rollers		1
No. Of Tracks		38

## HYDRAULIC SYSTEM

Main Pump	POWERPLUS	
Maximum Flow	L/min	167
Working Pressure	MPa	27.5

## CABIN

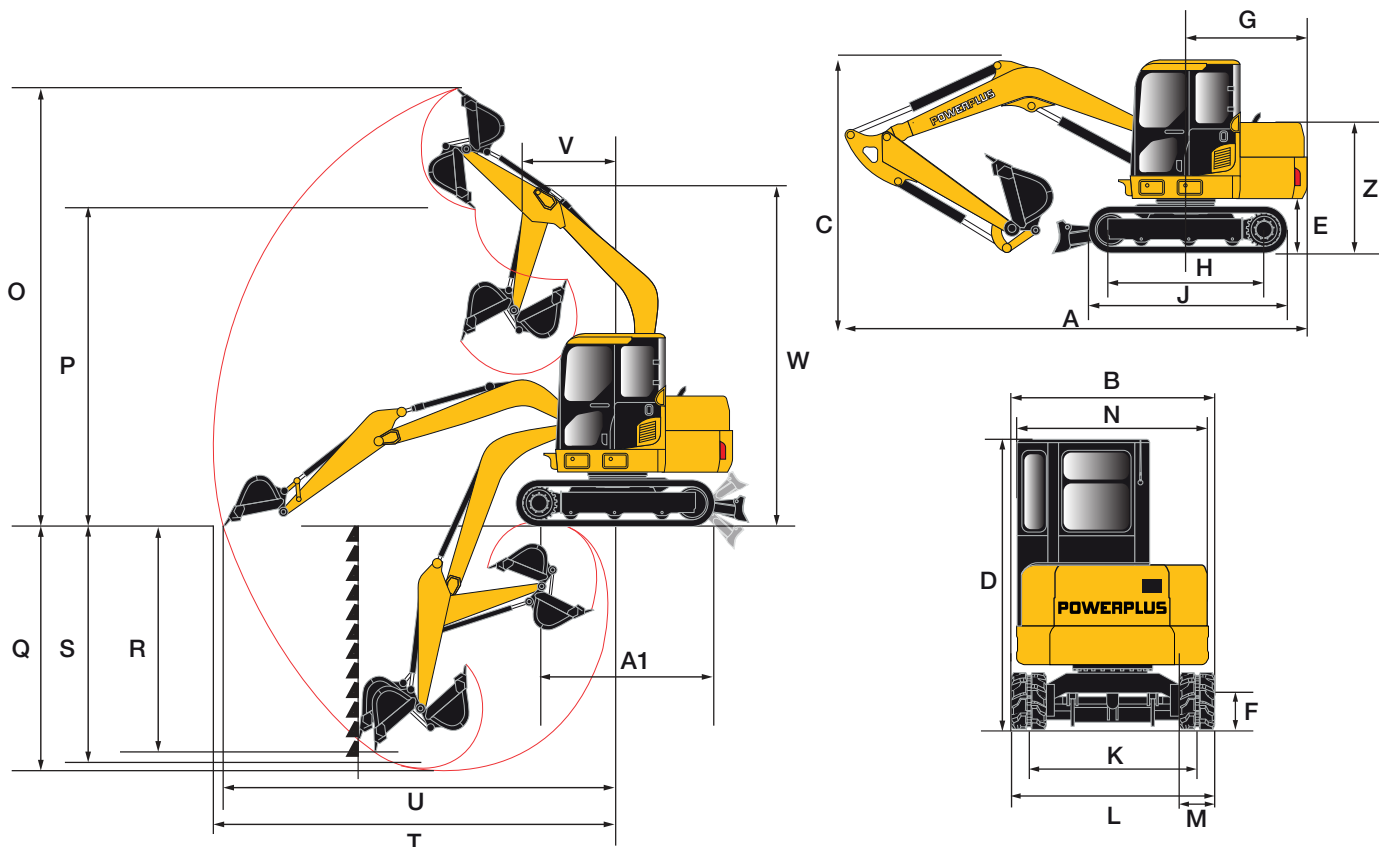
An ergonomically designed sound proof cabin, enabling wide operational view, comes standard with designer upholstery, adjustable POWERPLUS mechanical suspension driver's seat, streamline dashboard, aircon and radio/mp3 player for extensive operations with well deserved comfort.

## DIMENSIONS

A	Overall Length	mm	6100
B	Overall Width	mm	2300
C	Overall Height (To Top Of Boom)	mm	2515
D	Overall Height (To Top Of Cab)	mm	2580
E	Counterweight Ground Clearance	mm	760
F	Minimum Ground Clearance	mm	380
G	Rear Swing Radius	mm	1755
H	Track Ground Length	mm	2150
J	Track Length	mm	2760
K	Track Gauge	mm	1700
L	Track Width	mm	2150
M	Track Shoe Width	mm	450
N	Turntable Width	mm	2198
V	Minimum Swing Radius	mm	1795
W	Maximum Height At Min Swing Radius	mm	5500
Z	Height Of Counterweight	mm	1725
A1	Ground Length (Transportation)	mm	3700

## WORKING RANGE

O	Maximum Digging Height	mm	7165
P	Maximum Dumping Height	mm	5065
Q	Maximum Digging Depth	mm	4038
R	Maximum Vertical Digging Depth	mm	3505
S	Maximum Digging Depth For 2.5m	mm	3680
T	Maximum Digging Reach	mm	6330
U	Maximum Digging Reach At Ground Level	mm	6180



[www.powerplus.us](http://www.powerplus.us)

### **International Division**

**POWERPLUS GROUP PTE. LTD.**

Powerplus Building  
39 Ubi Crescent, Singapore 408587  
Tel: (65) 63399333  
Fax: (65) 63399933  
Email: [enquiry@powerplus.us](mailto:enquiry@powerplus.us)

### **Research & Development Facility**

**POWERPLUS GROUP INC., U.S.A.**

2130 N. Arrowhead Avenue,  
San Bernardino, CA 92405, USA  
Tel: (1) 909 300 3333  
Fax: (1) 909 323 3333  
Email: [hq@powerplus.us](mailto:hq@powerplus.us)

Distributed By:

 **POWERPLUS** is the registered TM of  **POWERPLUS GROUP INC., USA**  
In the United States of America & Worldwide

All rights of manufacturer and of this book reserved. Unauthorized duplication is a violation of application law.