

www.powerplus.us



**Manufactured By**  
POWERPLUS GROUP INC., U.S.A.

**International Division**  
POWERPLUS GROUP PTE. LTD.  
Powerplus Building  
39 Ubi Crescent, Singapore 408587  
Tel: (65) 63399333  
Fax: (65) 63399933  
Email: enquiry@powerplus.us

**Research & Development Facility**  
POWERPLUS GROUP INC., U.S.A.  
2130 N. Arrowhead Avenue,  
San Bernardino, CA 92405, USA  
Tel: (1) 909 300 3333  
Fax: (1) 909 323 3333  
Email: hq@powerplus.us

Distributed By:



**WHEEL EXCAVATOR**  
**PP220W-XI ADVANCE**

POWERPLUS is the registered TM of POWERPLUS GROUP INC., USA  
In the United States of America & Worldwide

All rights of manufacturer and of this book reserved. Unauthorized duplication is a violation of application law.



TECHNICAL  
SPECIFICATIONS



Advanced multifunctional monitor delivers critical machine data with clear visibility



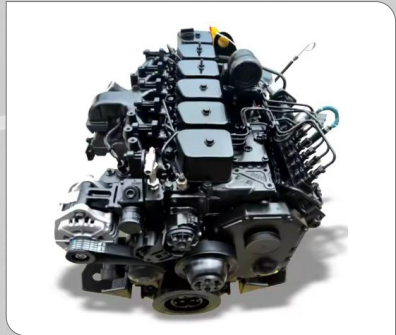
Pilot-style joystick control levers ensure precise, responsive, and easy operation



Operator-focused cabin design provides superior ergonomics and long-duration comfort



Heavy-duty axle and stabilizer system engineered for maximum durability and stability in demanding conditions



High-performance Cummins engine delivers optimal power output to maximize digging efficiency

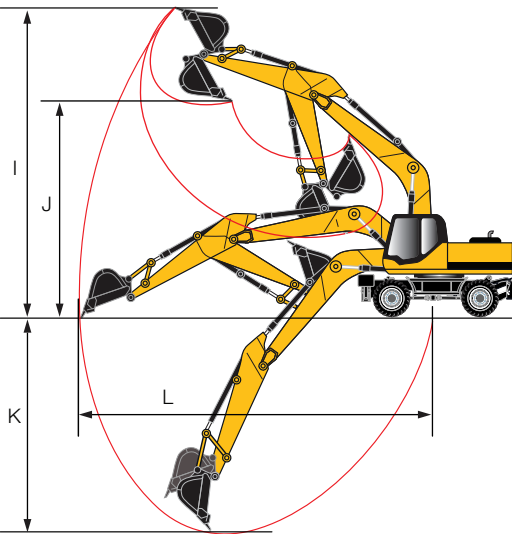
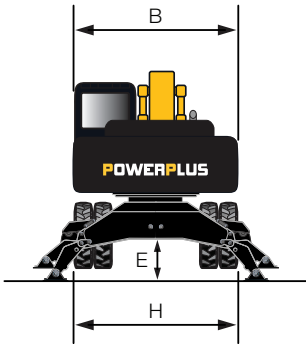
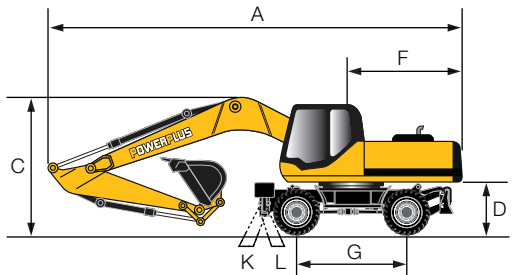


Simplified maintenance with direct access to key components and centralized service points

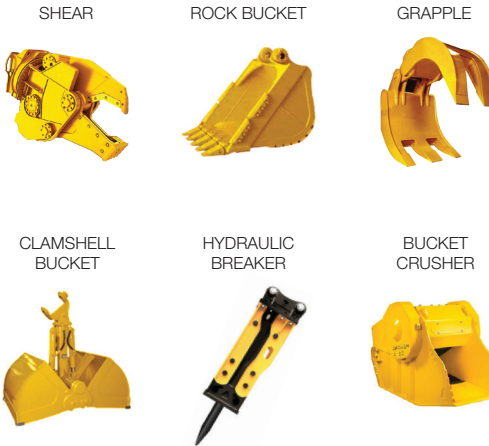
PP220W-XI ADVANCE

MAIN SPECIFICATION			
Operating Weight		kg	21000
Rated Bucket Capacity		m³	1.1
Maximum Digging Force		kN	140
Swing Speed		rpm	12
Maximum Gradeability		%	70
Travel Speed		km/h	32
ENGINE			
Model		Cummins 6BTAA5.9-C205	
Type		4-cycle water-cooled, direct injection, Turbocharged	
Rated Power		HP	205
Rated Speed		rpm	2000
HYDRAULIC SYSTEM			
Main Pump		PNM FK	
Swing Pump		PNM FK	
Main Valve		Parker	
Working Pressure		MPa	34
TRANSMISSION			
Model		ZF 2HL290	
Type		Hydrostatic Powershift	
AXLE			
Type		ZF Wet Brake Axle	
DIMENSIONS			
Overall Length	A	mm	10006
Overall Width	B	mm	2500
Overall Height	C	mm	3515
Counterweight Clearance	D	mm	1309
Minimum Ground Clearance	E	mm	380
Rear Swing Radius	F	mm	2412
Wheelbase	G	mm	2850
Tread	H	mm	1920
WORKING RANGE			
Maximum Digging Height	I	mm	10329
Maximum Dumping Height	J	mm	7397
Maximum Digging Depth	K	mm	6052
Maximum Digging Reach	L	mm	10283
SERVICE REFILL CAPACITIES			
Fuel Tank	L	350	
Hydraulic Oil Tank	L	220	
TIRE			
Size		10.00-20/8	

DIMENSIONS  
AND OPTIONS



ATTACHMENTS



As our products are upgraded periodically, we reserve all rights to change any information without prior notice.